



Features Manual Digital Trainer Kit Simulator

www.deldsim.com

What is www.deldsim.com ?

Let's start with the Introduction

Digital Electronics & Logic Design Simulator

- ❖ *Online platform for students to perform their Digital Electronics Assignments*
- ❖ *Without any hardware requirements at anytime, anywhere on their devices.*
- ❖ *DeldSim taking small step towards **revolution in method of Digital Electronics circuit implementation.***
- ❖ *We launched this platform to provide students around the world with high quality knowledge in the Digital Electronics.*

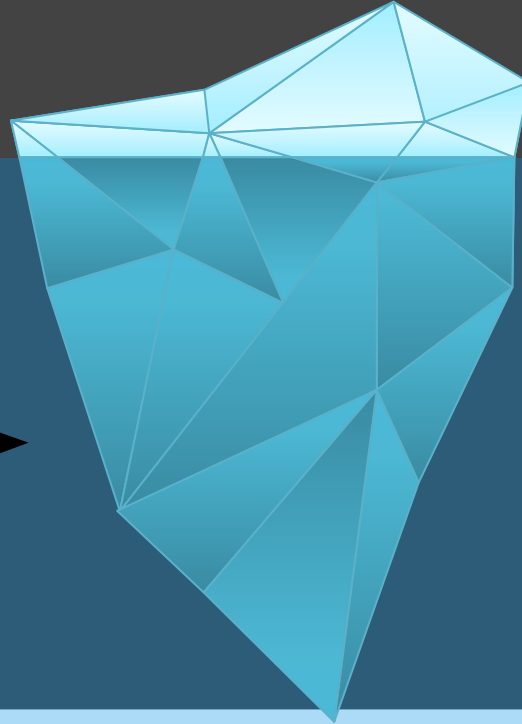


Our team is passionate about supporting the Engineering Students in furthering their talent, skills and career. We are on a mission to build the world's best platform for Engineers to gain inspiration, motivation, education, knowledge about Digital Electronics.

Why Practice is important ?

**Performance in
Practical Exam**

Practice & Hard Work





VIRTUAL SIMULATOR

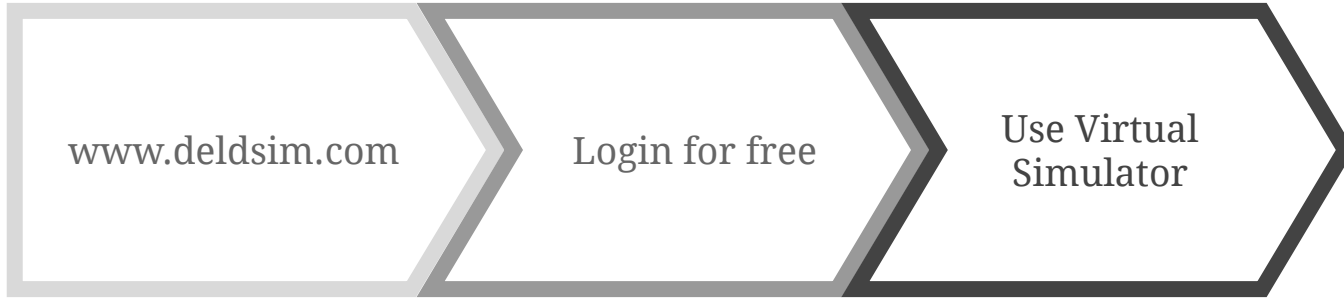
we created first Virtual Digital Trainer Kit Simulator, which offers you all the functionalities of Traditional Trainer kit which you use in your Lab.

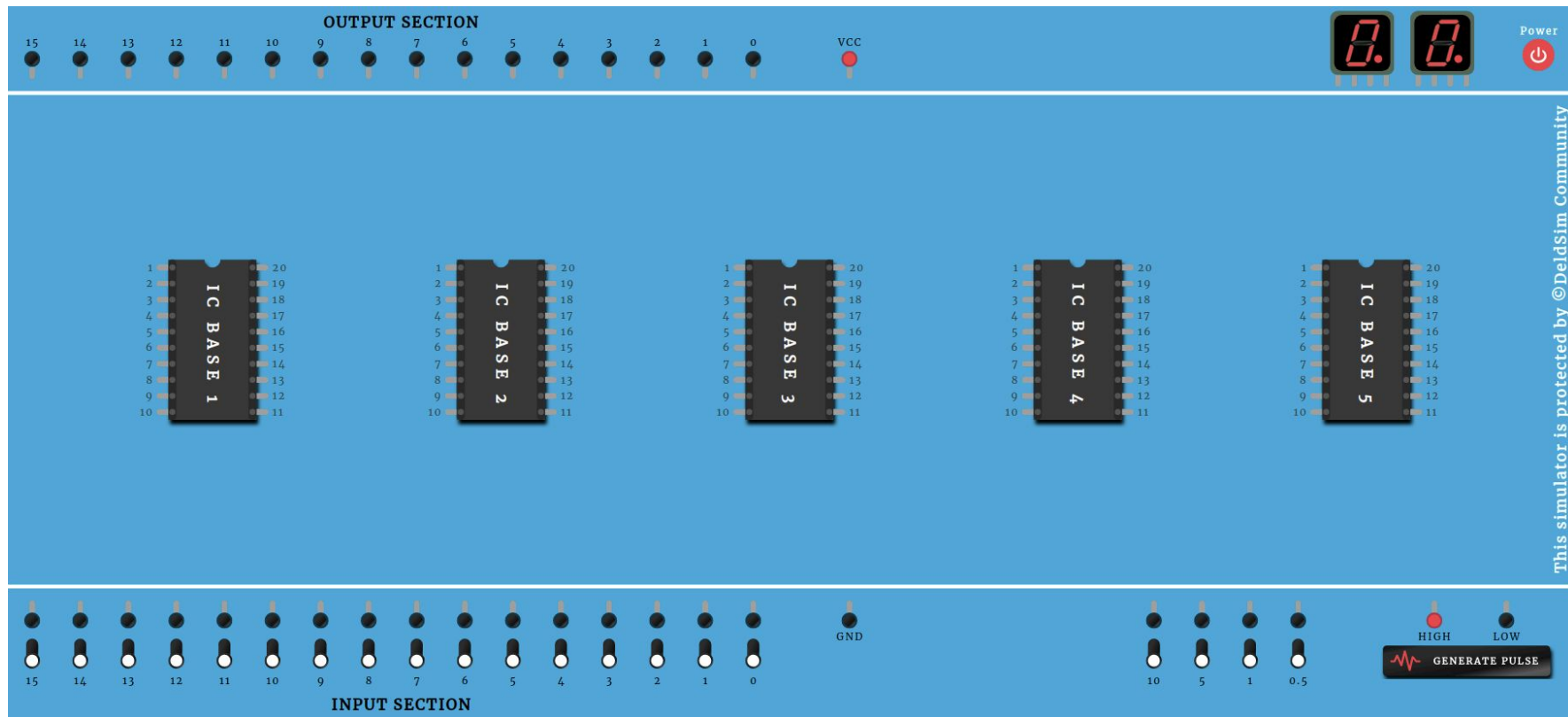
Learn Electronics with your Virtual Trainer Kit

We revolutionized the way of Digital Electronics circuit implementation with Digital Trainer Kit simulator. Now you can perform all your digital electronics assignments from home.

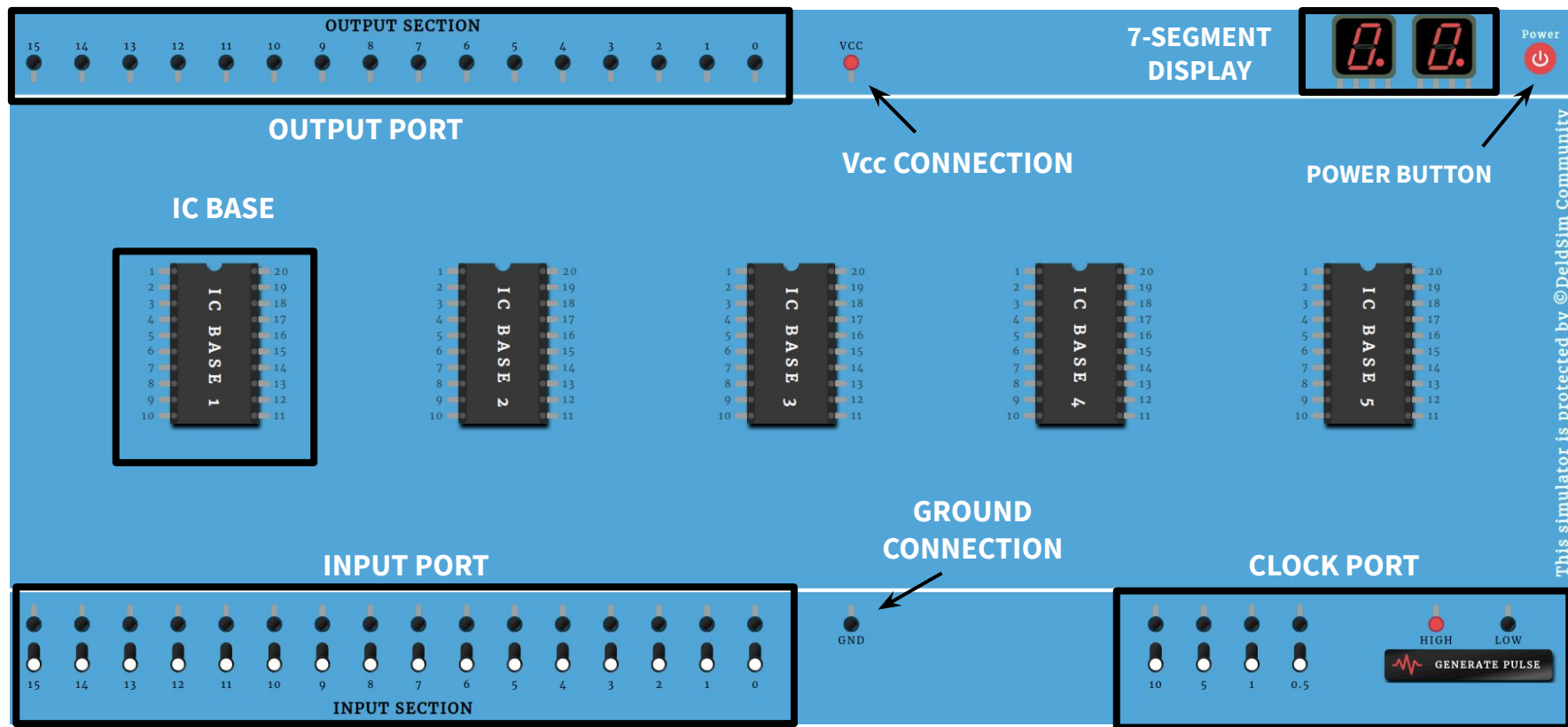
[Get Started](#)

OUR PROCESS IS EASY





This simulator is protected by ©DeldSim Community



This simulator is protected by ©deldsim Community

Features of Deldsim



30+ ICs

We provide all the required ICs for different digital electronics assignments



Datasheets

We provide datasheets of all the required ICs. It helps students to understand basics of ICs



E-Teacher Assignments

we provide E-Teacher functionality to guide students with specific steps for implementation of different assignments.



Actual Current Flow

We try to visualize actual current flow in the circuits. It will be helpful for students to understand basics of circuits



According to University Syllabus

All the assignments in the university syllabus can be performed on the virtual simulator



Easy to use

Virtual simulator is platform independent and anyone can use it on any browser without any extra hardware requirements.

ICs Available for Simulation

<input type="checkbox"/>	74LS00	Quad 2-input NAND Gates	<input type="checkbox"/>	74LS74	Dual Positive-Edge D-Flip-Flops
<input type="checkbox"/>	74LS02	Quad 2-input NOR Gates	<input type="checkbox"/>	74LS76	Dual Master-Slave J-K Flip-Flops
<input type="checkbox"/>	74LS03	Quad 2-input NAND Gates	<input type="checkbox"/>	74LS83	4-Bit Binary Adders with Fast Carry
<input type="checkbox"/>	74LS04	Hex Inverting Gates	<input type="checkbox"/>	74LS85	4-Bit Magnitude comparators
<input type="checkbox"/>	74LS05	Hex Inverters Gates	<input type="checkbox"/>	74LS86	Quad 2-input Exclusive-OR Gates
<input type="checkbox"/>	74LS08	Quad 2-input AND Gates	<input type="checkbox"/>	74LS90	Decade Counters
<input type="checkbox"/>	74LS10	Triple 3-input NAND Gates	<input type="checkbox"/>	74LS93	Binary Counters
<input type="checkbox"/>	74LS11	Triple 3-input AND Gates	<input type="checkbox"/>	74LS132	Quad 2-input NAND Gates
<input type="checkbox"/>	74LS14	Hex Inverters Gates	<input type="checkbox"/>	74LS138	Decoders
<input type="checkbox"/>	74LS20	Dual 4-Input NAND Gates	<input type="checkbox"/>	74LS139	Demultiplexers
<input type="checkbox"/>	74LS21	Dual 4-Input AND Gates	<input type="checkbox"/>	74LS151	Multiplexers
<input type="checkbox"/>	74LS27	Triple 3-input NOR Gates	<input type="checkbox"/>	74LS153	Dual 4-1 Data Selectors/Multiplexers
<input type="checkbox"/>	74LS30	8-input NAND Gates	<input type="checkbox"/>	74LS191	Synchronous 4-Bit U/D Counters
<input type="checkbox"/>	74LS32	Quad 2-input OR Gates	<input type="checkbox"/>	74LS194	Bidirectional Universal Shift Register
<input type="checkbox"/>	74LS38	Quad 2-input NAND Gates	<input type="checkbox"/>	74HC191	Synchronous 4-Bit U/D Counters
			<input type="checkbox"/>	74HC194	Bidirectional Universal Shift Register

WE PROVIDE DATASHEETS OF ALL ICs

54LS08/DM54LS08/DM74LS08 Quad 2-Input AND Gates

1 / 6



June 1989

54LS08/DM54LS08/DM74LS08 Quad 2-Input AND Gates

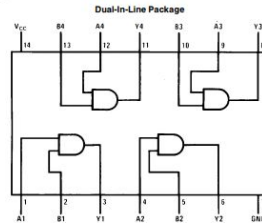
General Description

This device contains four independent gates each of which performs the logic AND function.

Features

- Alternate Military/Aerospace device (54LS08) is available. Contact a National Semiconductor Sales Office/Distributor for specifications.

Connection Diagram



Order Number 54LS08DMQB, 54LS08FMB, 54LS08MQB, 54LS08S, DM54LS08W, DM74LS08M or DM74LS08N
See NS Package Number E20A, J14A, M14A, N14A or W14B

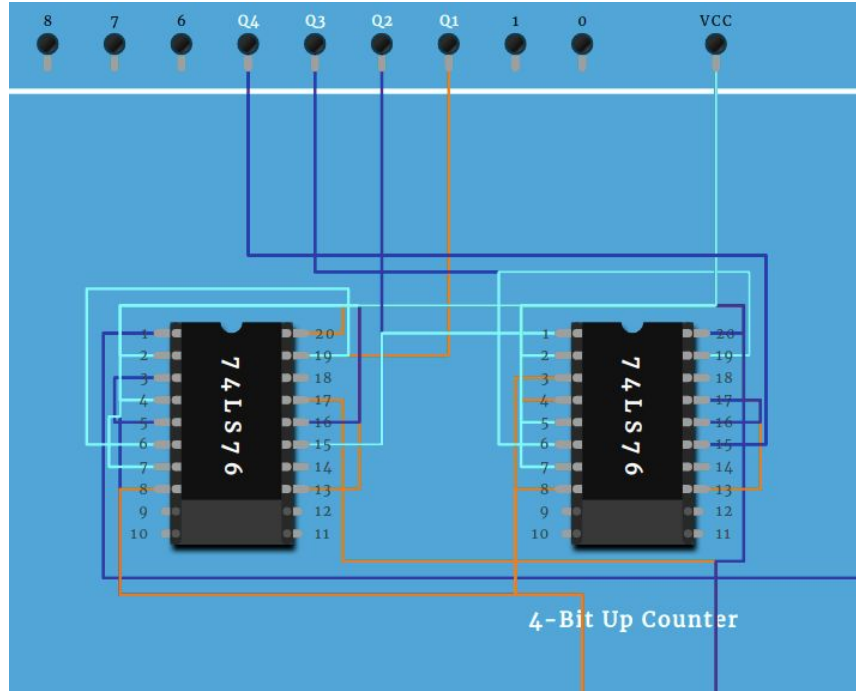
Function Table

Y = AB		
Inputs		Output
A	B	Y
L	L	L
L	H	L
H	L	L
H	H	H

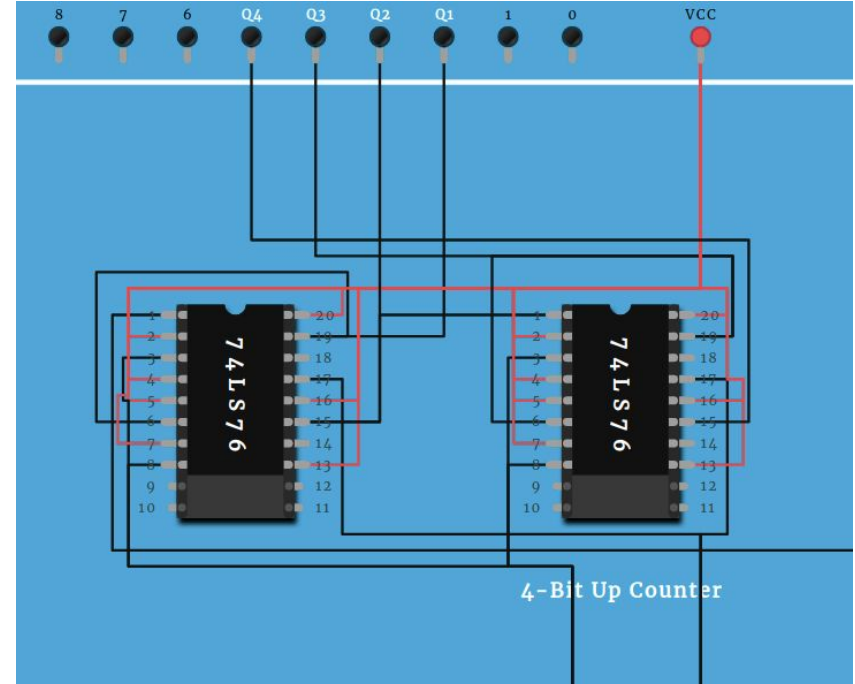
H = High Logic Level
L = Low Logic Level

54LS08/DM54LS08/DM74LS08 Quad 2-Input AND Gates

STUDENTS CAN VISUALIZE CURRENT FLOW INSIDE THE CIRCUITS



Normal Circuit



Current Visualization



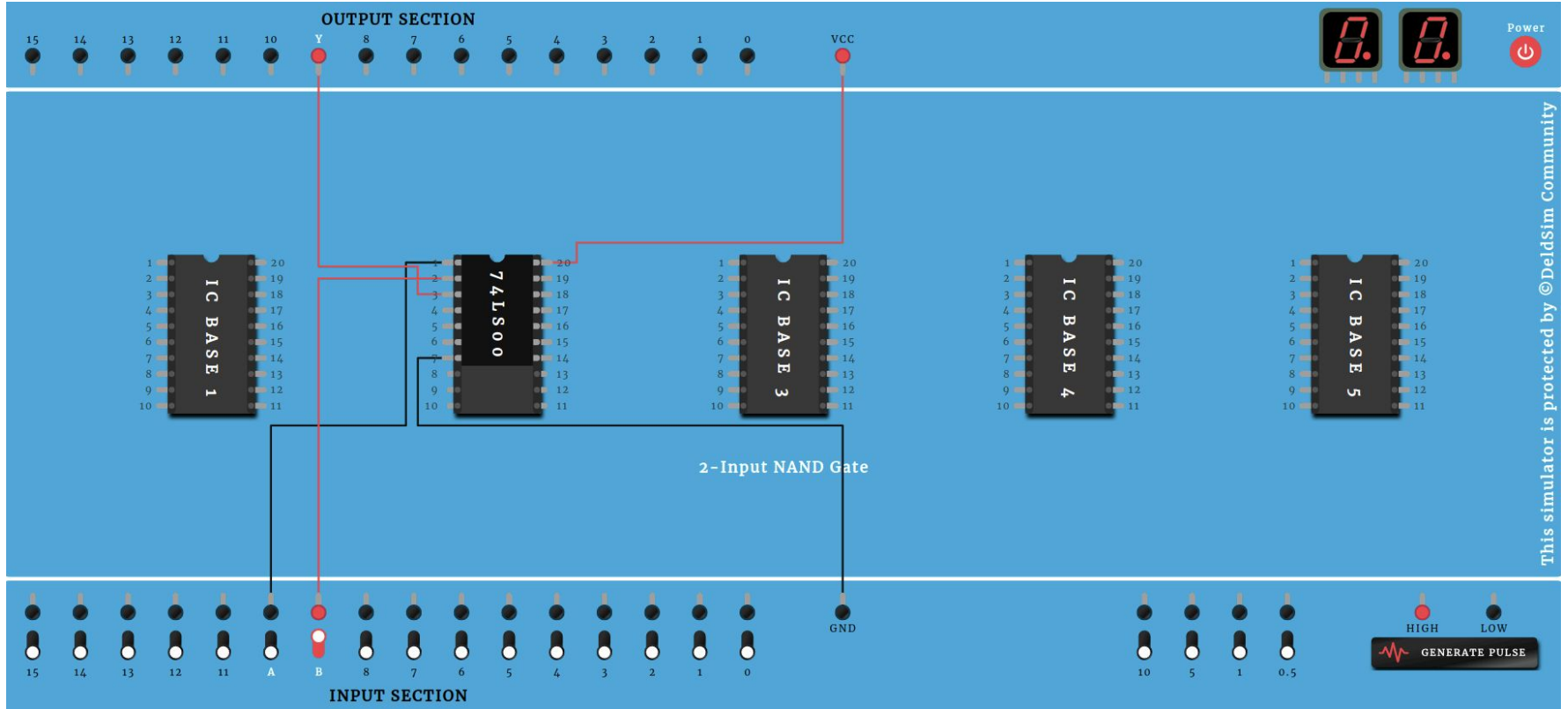
E-Circuit Assignments

we provide E-Teacher functionality to guide students with specific steps for implementation of different assignments.

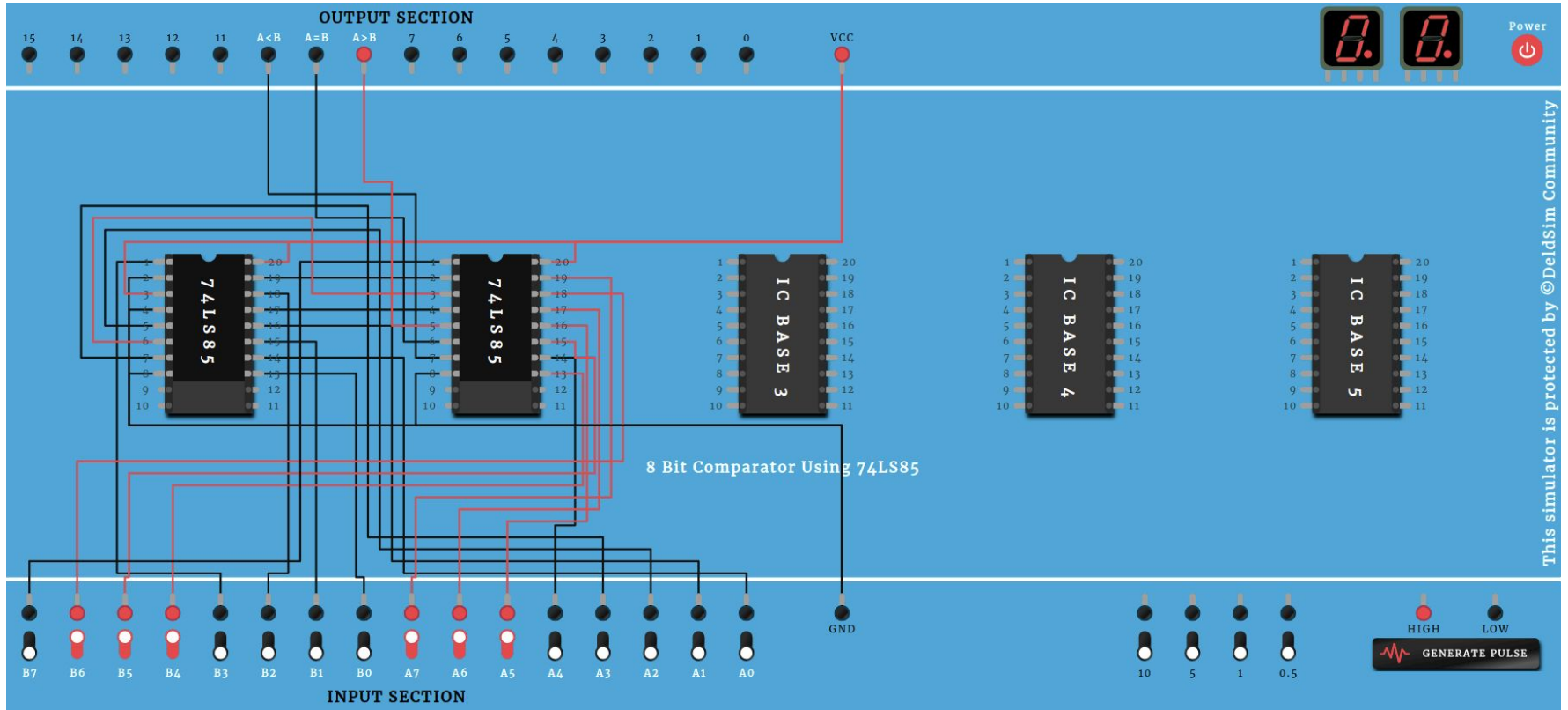
We have 70+ ready to use assignments to help students with step by step guidance

Link: www.deldsim.com/circuits

2- INPUT NAND GATE ASSIGNMENT



8- BIT COMPARATOR USING IC 74LS85



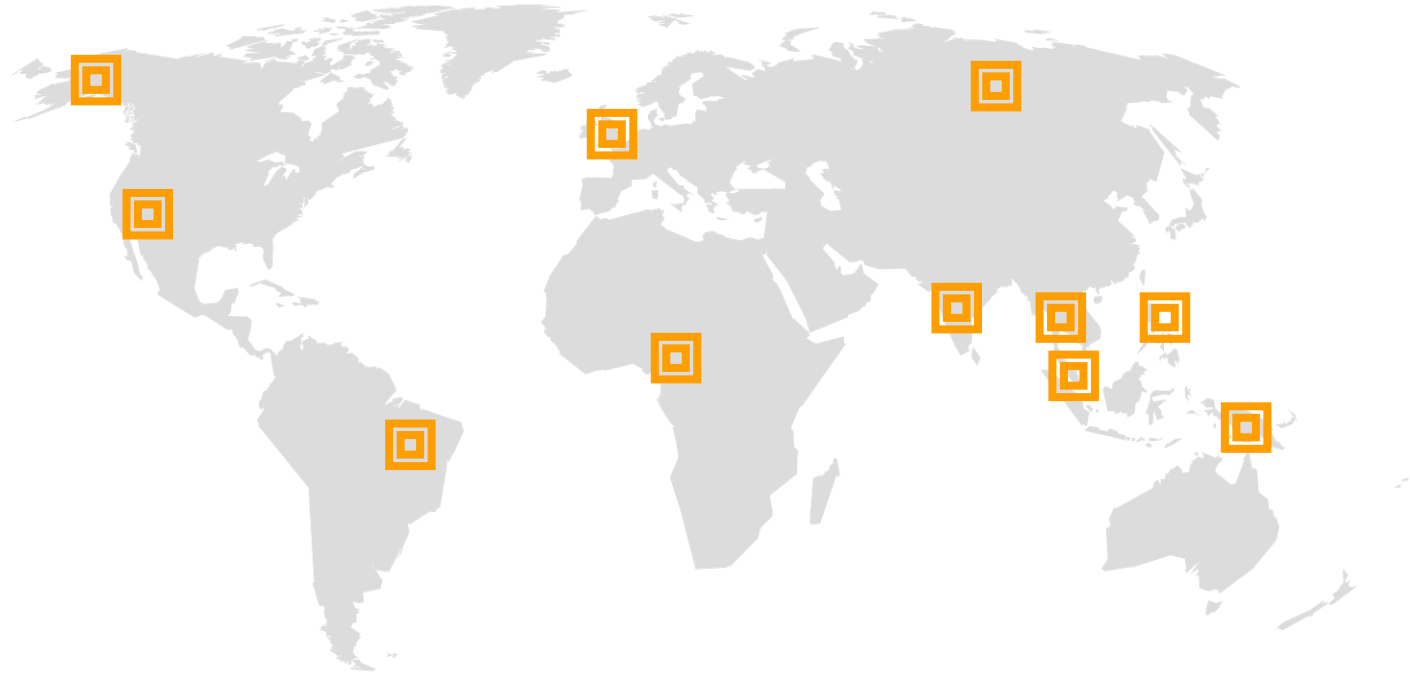
www.deldsim.com/simulator



*We don't just teach **Electronics**...*
*We make **Electronics** Interesting...*



Deldsim.com is helpful for above mentioned engineering streams



Trust from Global Students



3,14,568

That's a lot of views

29,012 users

And a lot of users

100%

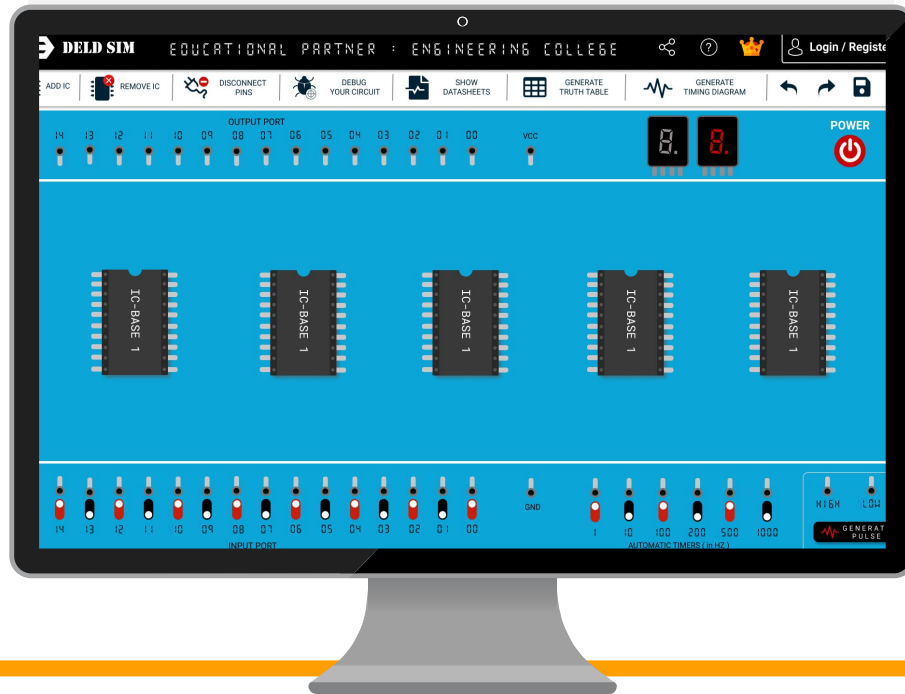
Total success !

“

"Price is what you pay. Value is what you get."

- Warren Buffett

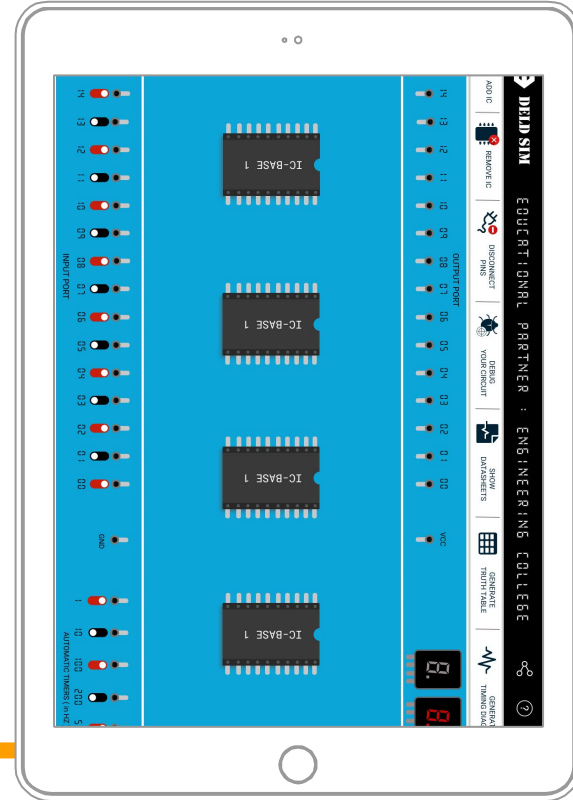
DESKTOP VIEW



*Perform Digital
Electronics Assignments
without any hardware
requirements at anytime,
anywhere on your devices.*

TABLET VIEW

*Perform Digital
Electronics Assignments
without any hardware
requirements at anytime,
anywhere on your Tablet*



Join us on youtube : Digital Simulator



Digital Simulator

SUBSCRIBED



HOME

VIDEOS

PLAYLISTS

CHANNELS

DISCUSSION

ABOUT



Uploads PLAY ALL

≡ SORT BY



Deldsim - Perform AND Gate Circuit in Digital Electronics...

1K views • 9 months ago



Deldsim - How to use Automatic Clock Port in...

246 views • 9 months ago



Deldsim - How to Remove IC in Digital Electronics...

90 views • 9 months ago



Deldsim - How to Dis-connect pin connections in Digital...

140 views • 9 months ago



Deldsim - How to Connect single pin to multiple...

76 views • 9 months ago



Deldsim - How to connect pin connections in Digital...

41 views • 9 months ago



Deldsim - How to Add IC in Digital Electronics Simulator

87 views • 9 months ago



Deldsim - How to Connect Multiple IC in Digital...

107 views • 9 months ago

THANKS!

Any questions?

You can find me at

info@deldsim.com

+91-7261 946067

www.deldsim.com/feedback